

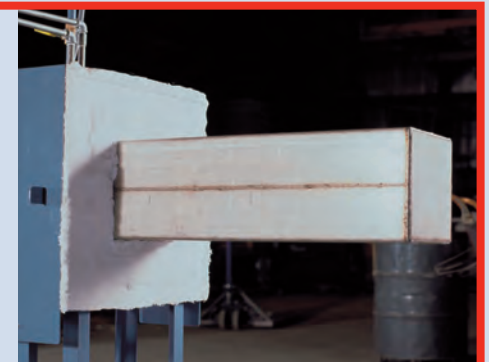
Model XLC 824 with removable retort option



Retort pressure gauge & test bib



Retort being pushed into furnace



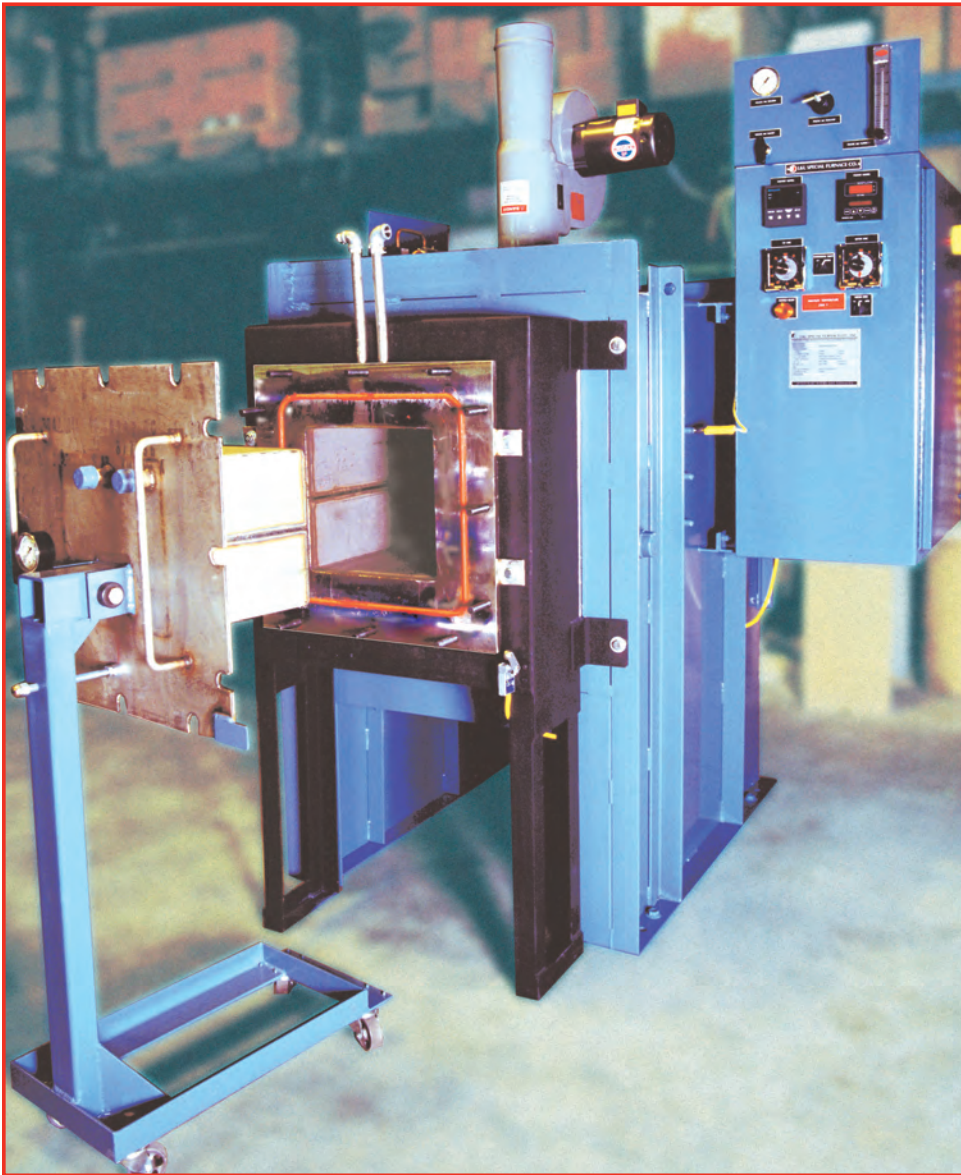
Retort and insulated plug on cart

Low dew point retort furnaces; hydrogen systems with superior safety controls

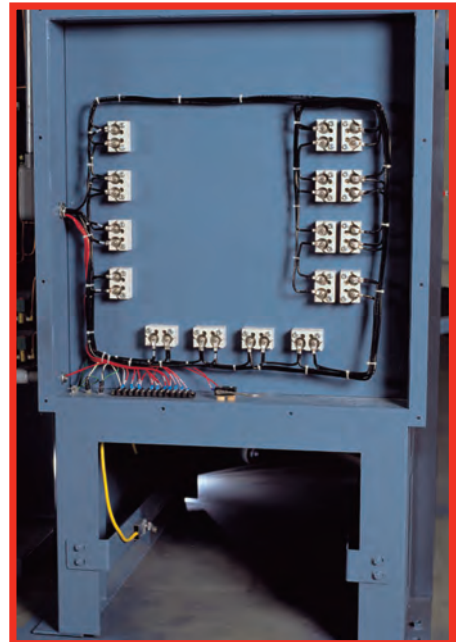
The XLC Series retort furnaces are designed for low dew point atmosphere processing. Either inert or hydrogen atmospheres may be used. Hydrogen furnaces feature a superior safety system that exceeds NFPA 86C regulations. Smaller XLC furnaces can have a removable retort for fast cooling. Larger ones have an optional venturi cooler. Applications include magnetic steel processing, brazing, stainless steel annealing, sintering and many other requirements where good atmosphere control is necessary. Temperatures range from 1400°F to 2200°F depending on the alloy of the retort. Larger retorts feature "D" shaped roofs and/or corrugated construction.

Your Thermal Investment Deserves Special Treatment

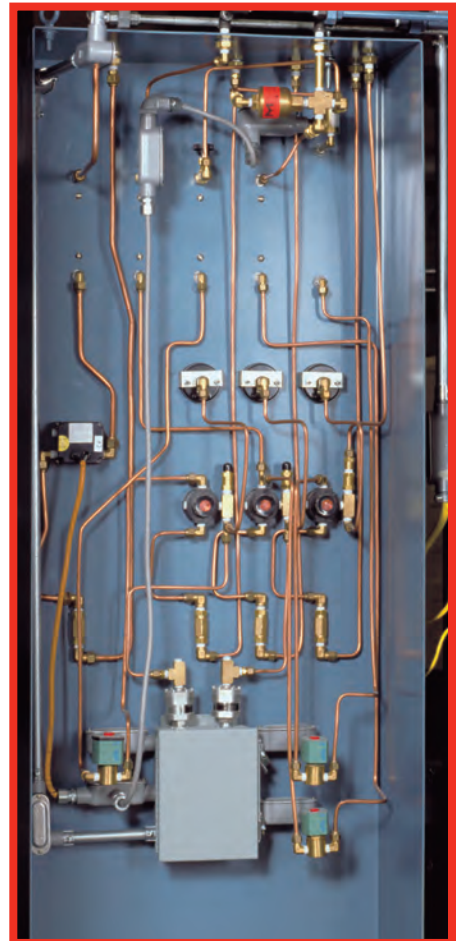
20 Kent Road • PO Box 2129 • Aston, PA 19014 T: 610.459.9216 • F: 610.459.3689 • lfnurnace.com



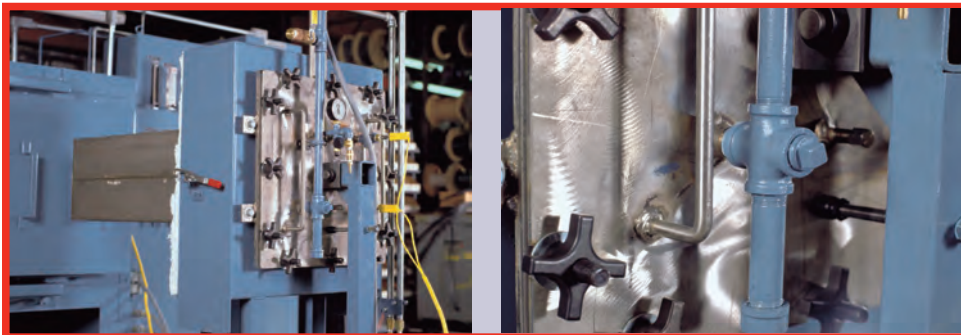
This is an XLC 824 with a retort fixed in the furnace and a cooling venturi. The cart that holds the plug door is similar to the XLC furnaces with removable retorts. This system has an inert atmosphere control. Notice the red silicone "O" ring retort seal. Gas and thermocouple connections on a fixed retort are on the rear rather than in the door plug.



Detail of wiring for elements



Detail of hydrogen piping



Detail of removable retort plug.

Detail of exit pipe with clean out and the quick release clamps.

Your Thermal Investment Deserves Special Treatment

20 Kent Road • PO Box 2129 • Aston, PA 19014 T: 610.459.9216 • F: 610.459.3689 • [lfurnace.com](http://l furnace.com)